

stryker®

Stryker Prime

Mobile. Safe. Efficient.



Prime Series Stretchers

The demands on healthcare professionals have never been greater — heavier patients, longer transports, demanding patients, and an expectation to perform with fewer hands on deck. You are forced to do more with less. Stryker has the Prime Solution to help you address these needs.



**Stryker Prime
Fifth Wheel**



**Stryker Prime
Big Wheel**

The Stryker Prime Solution

Patients are spending more time on stretchers than ever before.

Stryker Prime is designed to ensure your safety and efficiency while enhancing the patient experience. Prime is BackSmart. It can be instrumental in reducing caregiver injuries during patient care. Prime offers three mobility options and unprecedented patient comfort. Patients can adjust their own positions without calling a caregiver for assistance. A variety of available support surfaces and configuration options give Prime the versatility you need.

- The Stryker Prime 700 lb weight capacity combined with multiple mobility solutions help accommodate heavy patients and long transports.
- Power and control options give more flexibility and control than ever to both nurse and patient.
- A choice of available surfaces addresses patient comfort and skin issues associated with extended lengths of stay, helping maintain a positive patient experience.



**Stryker Prime
Zoom**

Stryker Prime is Mobile

The Stryker Prime series is the solution to long transports, heavy patients and carpeted hallways. With three mobility options across electric and manual versions, you will find the solution that best suits your needs.



Stryker Prime with Fifth Wheel

Stryker Prime is available with a retractable fifth wheel to provide controlled traction and cornering.



Stryker Prime with Big Wheel

The Big Wheel mobility option can reduce start-up force up to 50 percent and steering effort up to 60 percent.



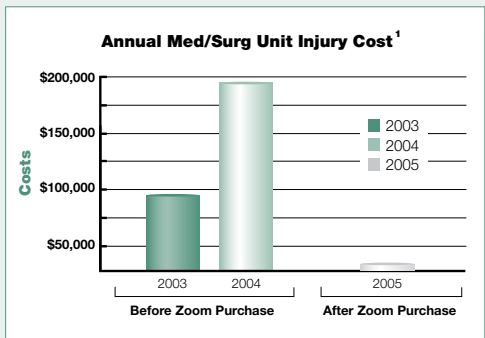
Stryker Prime with Stryker Zoom Motorized Drive System

Stryker Prime virtually eliminates manual pushing with Stryker Zoom motorized drive technology.

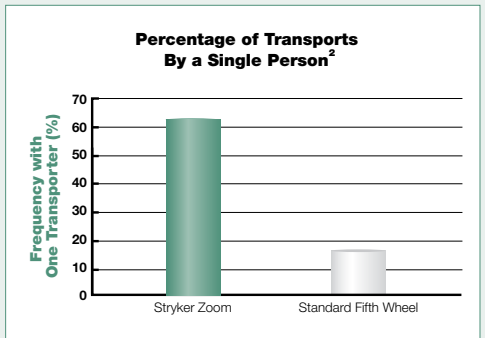


Stryker case studies show:

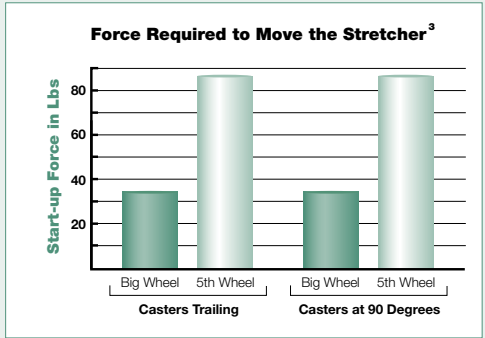
With higher volume and heavier patients, transport is more challenging than ever. Zoom can reduce nurse injury rates up to 98 percent, achieving significant savings.



Stryker Prime helps alleviate the stress and strain of daily patient transport by increasing efficiency with Zoom, giving you more time to focus on your patients.



Daily pushing, pulling and steering stretchers with conventional casters can take a toll on your back. Big Wheel reduces steering effort up to 60 percent and start-up force up to 50 percent.



Stryker Prime Can Save Your Back

Experience the electric option on the Stryker Prime Stretcher with powered lift, knee gatch and backrest. Even when electric controls are not used, Stryker BackSmart design makes manual adjustments easy for a seamless transition between electric and manual modes.

Up to 50 percent
of nurse calls are for
patient repositioning.

With patient controls on the siderails, you give your patients more control of their own comfort — and less need to call you for assistance and repositioning. All electric controls have patient lockouts and manual backup, including the exclusive BackSmart Lift Assist.

With the increased comfort of Prime, patients feel less urgent need to transfer to beds, giving you more control of your time.



a | Zoom Handles

Activate the drive system with a gentle squeeze and push of the handles for effortless transport of even the heaviest patients.

b | Electric Head End Lift Assist

A powered head end delivers not only convenience for the patient but caregiver safety. Manual Lift Assist backrest comes standard as a backup to the electric version.

c | Siderail Controls

Patient controls on siderails are staggered so they can be easily accessed when the patient is in any position.

d | Electric Knee Gatch

A powered knee gatch empowers patients to adjust to their own level of comfort while protecting the caregiver from interruptions, stress and lifting.

e | Control Panel

The electric controls and patient lockout button are located on the control panel. This section is completely sealed for effective power-washing or manual cleaning.

f | Four-Sided Brakes

Brakes on all casters lock both rotation and swivel for superior security. Brake controls are located on all four sides for quick and easy accessibility.



g | Hydraulic Controls

For quick accessibility and efficiency, hydraulic lift controls are located on either side of the stretcher, with a foot end option.

h | Electric Lift

With electric lift, simply touch the pedal to raise the litter.

Nursing injuries are expensive for healthcare organizations and can shorten careers. Most injuries occur while repositioning, lifting or moving patients.

Stryker Prime Can Save Your Back

Stryker Prime is designed to help reduce or eliminate awkward body positions that can lead to injury by incorporating ergonomic and electric functionality. Bending or reaching to access controls is minimized. Switches and releases require low force and are easy to operate.

Stryker Prime is designed with nursing safety in mind — Now that's BackSmart.

Fewer interruptions for you. The patient has control of comfort with buttons on the Glideaway siderails.



Lift Assist Backrest

The patented Lift Assist backrest uses the patient's own weight as a counterbalance for an easy lift and to reduce boosting. Also available as a fully-powered option.



Knee Assist No-Crank Hydraulic Gatch

Simply slide the lever horizontally to raise the knee gatch without ever using a crank. No stress on wrists or hands. Also available as a fully powered option.



Pop-up Push Handles

Positioned for easy use when you need them. Completely hidden away when you don't.



Litter-Mounted Oxygen Bottle Holder

Oxygen bottle is mounted on the litter instead of the base to help reduce awkward bending, stooping and lifting.



Zero-gap, Glideaway Siderails

Glideaway siderails offer maximum patient security when raised yet are completely out of the way when down for zero-gap transfers.



Recovery Chair Position

Helps eliminate the need for unnecessary transfers by providing a comfortable position for patients to recover.



Greater Comfort and Enhanced Therapies

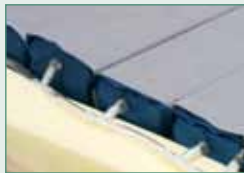
Whether it is extended lengths of stay or addressing patient comfort, the open architecture of Stryker Prime allows you to choose the support surface that meets your facility's needs. This advantage affords you the flexibility to provide customized care tailored to the individual needs of your patient population.



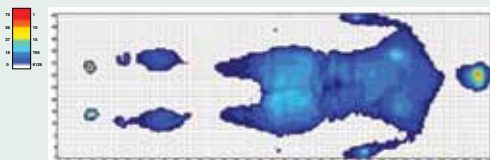
Pioneer Pressure Redistribution Surface

Pioneer Key Features

- Dartex 4-way stretch cover
- Air bladder pressure redistribution
- 700 lb capacity
- Sloped heel
- 26-inch or 30-inch width



Pioneer's eleven interconnected air bladders redistribute the patient's weight evenly to help prevent skin breakdown.



Ultra Comfort Surface



Ultra Comfort Key Features

- Dartex 4-way stretch cover
- High resiliency urethane
- 700 lb capacity
- Available in 4-inch or 5-inch thickness
- 26-inch or 30-inch width

Accessories



IV Caddy with Connector

Adds versatility as a separate support unit yet mounts directly to Stryker Prime for security.



Defibrillator Tray

Strong and easily mounted, it is positioned perfectly to support ancillary equipment yet remains out of the way.



Expandable Serving/Instruments Tray

Easily rests on the siderails, it creates space for charting and instruments or to enhance patient comfort.



Footboard/Chartholder

Adds handy storage for charts and paperwork.



Footboard Extender

A versatile 4-position footboard that can also be configured to extend patient surface, adjusted to support ancillary equipment or positioned as an angled charting surface.



IV Pole

Easy-to-use, convenient support for IV bottles. Available in two or three stage lengths.

Pictured: Three stage on left, two stage on right.



Siderail Pads

Siderail pads are available for increased coverage.



Upright Oxygen Bottle Holder

Holder uses the IV socket for added convenience, flexibility and accessibility.

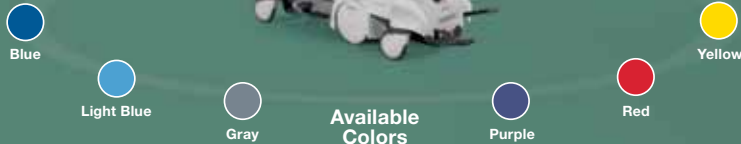
Image Matters

Improve the Patient's Experience

Every healthcare organization is competing for the satisfaction and loyalty of patients and their families. The aesthetics of the stretcher dramatically affect the total patient experience.

The Stryker Prime stretcher has a visual simplicity with smooth, rounded, continuous surfaces that feel friendly and touchable. Handles and siderails are curved and cushioned. Controls and icons are big and clear. The patient is in personal contact with the stretcher. The way it looks and the way it feels ... matter.

- Contemporary colors and shapes provide continuity and order
- Modern design communicates state-of-the-art technology and innovation
- Rounded and streamlined shape enhances cleanability
- Permanently attached caster covers elegantly shroud the casters
- Color-coded accent rings above the casters can identify departments and match other standardized departmental colors



Visit www.stryker.com/prime to see features in action and interactively build your own Stryker Prime.

This document is intended solely for the use of healthcare professionals.

A surgeon must always rely on his or her own professional clinical judgment when deciding whether to use a particular product when treating a particular patient. Stryker does not dispense medical advice and recommends that surgeons be trained in the use of any particular product before using it in surgery.

The information presented is intended to demonstrate the breadth of Stryker product offerings. A surgeon must always refer to the package insert, product label and/or instructions for use before using any Stryker product.

Products may not be available in all markets because product availability is subject to the regulatory and/or medical practices in individual markets. Please contact your Stryker representative if you have questions about the availability of Stryker products in your area.

Stryker Corporation or its divisions or other corporate affiliated entities own, use or have applied for the following trademarks or service marks: BackSmart, Big Wheel, LiftAssist, Knee Assist, Pioneer, Prime, Stryker, Zoom. All other trademarks are trademarks of their respective owners or holders.

The products listed above are CE marked according to the Medical Device Directive 93/42/EEC.



Literature Number: MTX366111609 Rev A
MTX6676/GS 05/10
Copyright © 2010 Stryker

stryker[®]

Joint Replacements

Trauma, Extremities & Deformities

Cranio-maxillofacial

Spine

Biologics

Surgical Products

Neuro & ENT

Interventional Pain

Navigation

Endoscopy

Communications

Imaging

Patient Handling Equipment

EMS Equipment

Stryker SA
Cité Centre
Grand-Rue 90
1820 Montreux
Switzerland

t: +41 21 966 12 01
f: +41 21 966 12 00

www.stryker.eu

REFERENCE

1. Stryker Medical Case Study. Evergreen Health Care. Seattle, Washington. June, 2006.
2. Stryker Medical Case Study. Sioux Valley Hospital. Sioux Falls, South Dakota. December, 2006.
3. Stryker Medical Case Study. Baylor Medical Center. Irving, Texas. December, 2005.

